



Exchange Pilot as a new Messaging infrastructure at CERN

Alberto Pace, for the IT/IS group - April 2002

alberto.pace@cern.ch

<http://cern.ch/alberto.pace>



CERN
Web Services





Electronic Mail at CERN

- ◆ The current services have been designed in 1996 - 97
- ◆ Dedicated infrastructure, dedicated team.
- ◆ Mandated to offer an IMAP-based mail service, an LDAP-based email address database, Mailing lists handling and news feeds
- ◆ Very successful service:
 - ◆ **Unanimously adopted site wide**
 - ◆ **Number of mailboxes in excess of 15'000**
 - ◆ **Very reliable**



Why a new infrastructure ?

- ◆ **New requirements have appeared**
 - ◆ **Personal / Shared Calendar with delegated authoring**
 - ◆ **Integration with PDAs, offline work and disconnected clients**
 - ◆ **With the possibility of merging back changes made on both sides (secretary scenario)**
 - ◆ **Web access to all services**
 - ◆ **Better security (SSL) and antivirus protection**
 - ◆ **Single logon, Voice Mail, Telephone integration, instant messaging, video conference, ...**
- ◆ **CERN global manpower reduction**
 - ◆ **2700 -> 2000 staff members, more focus on LHC**
 - ◆ **Coverage during the extended Christmas shutdown**
 - ◆ **Directives to reduce costs**
 - ◆ **Personnel, Money, Industrial Services (P+M+I)**



Objectives

- ◆ **Cost reduction**
 - ◆ **Cheaper server hardware providing more resources**
 - ◆ **Leverage from existing experience and services**
 - ◆ **Same hardware used for Win, Web services and PC farms**
 - ◆ **Potentially save 50K+ per year**
- ◆ **Increased functionality**
 - ◆ **Addressing user community requirements**
- ◆ **Leverage on PC & W2K technology and existing skills**
 - ◆ **Reducing diversity, hence simplifying the operations**
 - ◆ **Use of existing procedures (e.g. installations, backup, interventions, alarm & monitoring, etc.)**
 - ◆ **Economy of scale with same team for Web / Mail / Windows**
 - ◆ **All external interfaces based on standard protocols for interoperability**



Infrastructure for the Pilot

- ◆ **8 Server PCs**
 - ◆ **4 Back-end (message store)**
 - ◆ **2 Front End (Routing, Web access, ...)**
 - ◆ **2 spare**
- ◆ **Dimensioned to be “out” scalable by adding additional servers**
- ◆ **As the pilot has to investigate also behavior under heavy load, the pilot infrastructure is designed to be able host the full laboratory load**
- ◆ **In the final infrastructure, we believe that a final architecture with 12 servers (8 message stores) should be sufficient**
- ◆ **No licenses needed at this stage**
 - ◆ **Part of our MSDN / Premier Support Service agreement**



Addressing Requirement

- ◆ **Increased Security**
 - ◆ **In addition to normal IMAP and POP, enable SSL for client that supports it**
 - ◆ **Open ports imap(143), imaps(993), pop(110), pops(995)**
 - ◆ **In the long term consider to close ports imap(143) & pop(110)**
 - ◆ **Enable Authenticated SMTP service (versus the anonymous service today) with mail routing and relaying allowed**
 - ◆ **Enable secure Web Mail access over SSL for any browser (including legacy >= 4)**
 - ◆ **Open both http (80) and https (443) ports with port 80 being redirected to port 443**
 - ◆ **Install Antivirus software, scan message stores, Incoming and outgoing messages**
 - ◆ **Enable MAPI (secure and encrypted) in order to support native Exchange clients (Outlook)**
 - ◆ **Synchronize Mail accounts with Web/Win accounts. Single sign-on for Mail/Web/Win services**



Single Sign-on

- ◆ **Why single sign-on increases security ?**
 - ◆ **The user is an insecure component of the security chain if he has nothing to protect**
 - ◆ **Proliferation of accounts and passwords results in users not protecting their credentials on services they seldom use**
 - ◆ **By coupling multiple services together, we enforce security, because here or there, every person has something to protect (eg: mail, data in home directory, ...)**
 - ◆ **Current working group is considering (again) a proposal to synchronize AFS and Win/Mail/Web passwords**



Addressing Requirement

- ◆ **Enable “Calendaring”**
 - ◆ **Native Exchange clients (Outlook) support with MAPI enabled**
 - ◆ **Personal calendar in every mailbox**
 - ◆ **Access to “shared” calendar**
 - ◆ **Allows authoring delegation (secretary scenario)**
 - ◆ **Allows publishing of Agenda/Calendars on the web**
 - ◆ **Basic calendar functionality accessible cross platform using the Web interface, Read/Write mode**
 - ◆ **Complete shared calendaring possible through public folders**

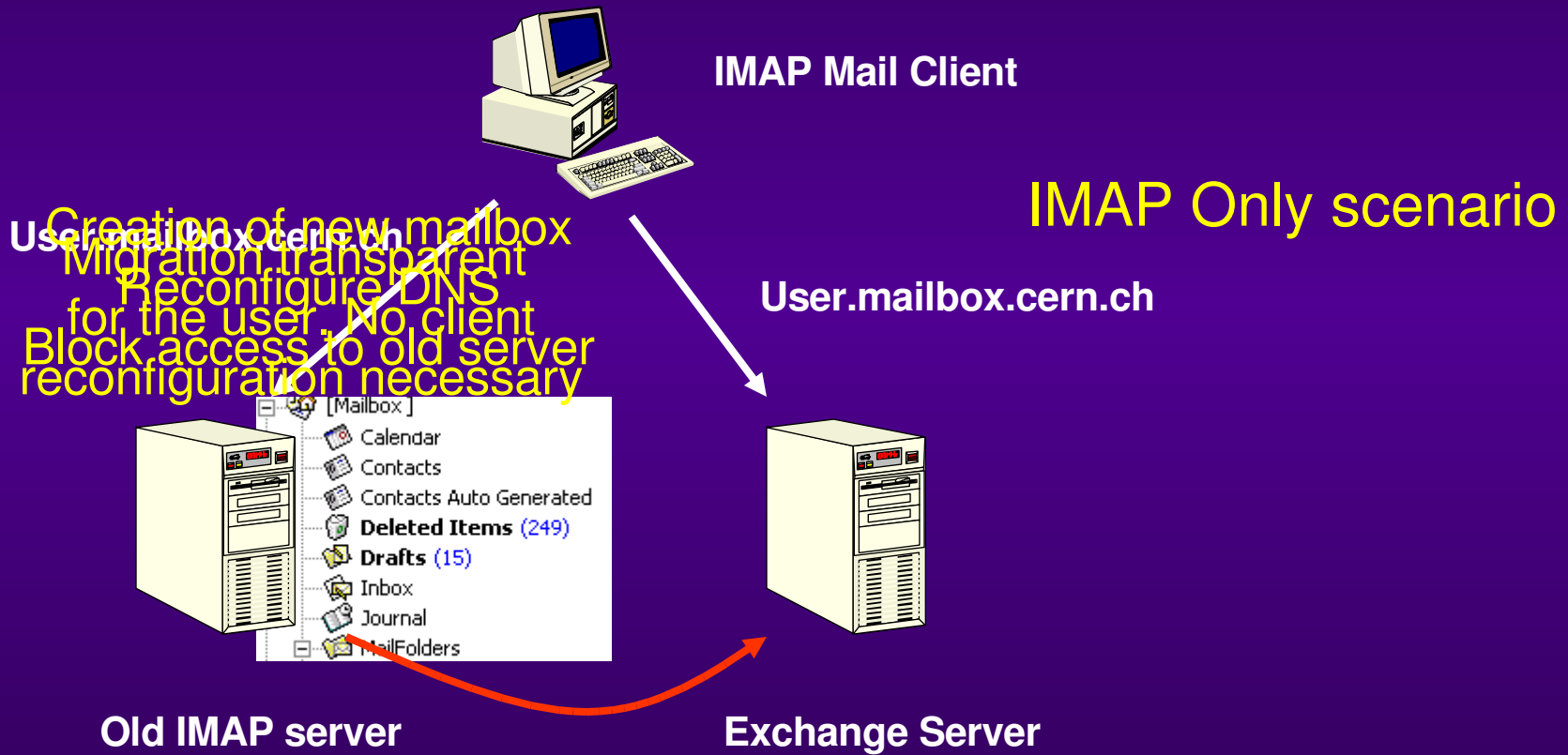


Addressing Requirement

- ◆ **Access to news**
 - ◆ **News feeds directed into public folders**
 - ◆ **Access to newsgroup also using the Web interface**
- ◆ **Explore new possibilities**
 - ◆ **Generalized use of e-groups (NICE2000 group manager). Same e-group objects can be referenced to set permissions but also as mailing list**
 - ◆ **Public folders for collaboration, document store, web site, ...**
 - ◆ **Fax, SMS, telephony gateways**
 - ◆ **Web integration**
 - ◆ **Voice mail**



Migration strategies - Phase 1



Asynchronous overnight migration of the message store



Migration strategies – Phase 2



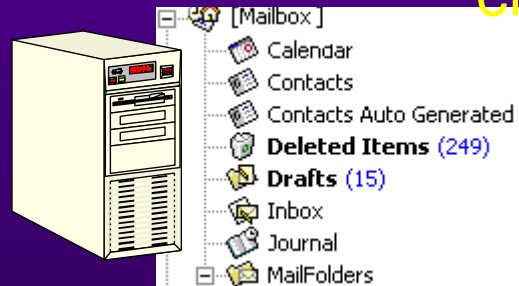
IMAP Mail Client

Client is reconfigured
From IMAP to MAPI

User wants extra features

User mailbox ~~is~~ `user@cern.ch`

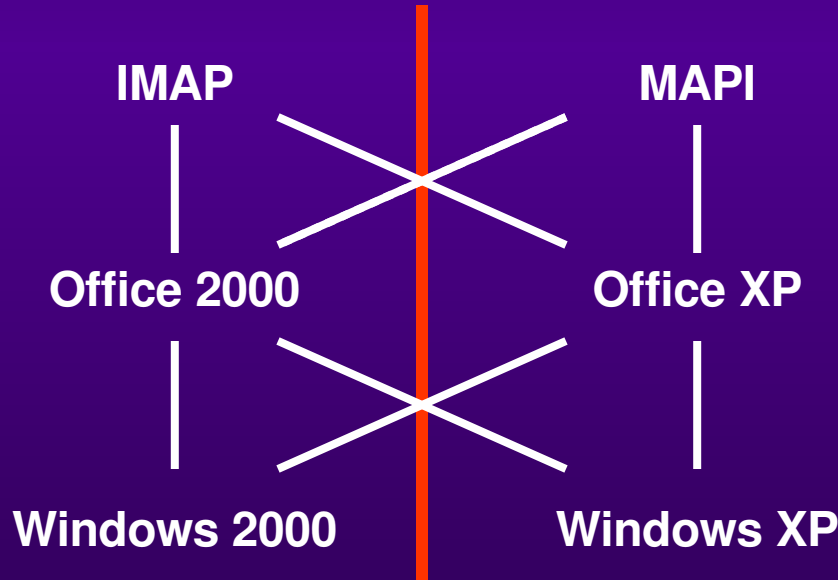
Server name should
change to `mmm.cern.ch`



Exchange Server



Mail Client Support Models



2 Models ?

8 Models ?
(just for windows mail clients)

3 Models ...

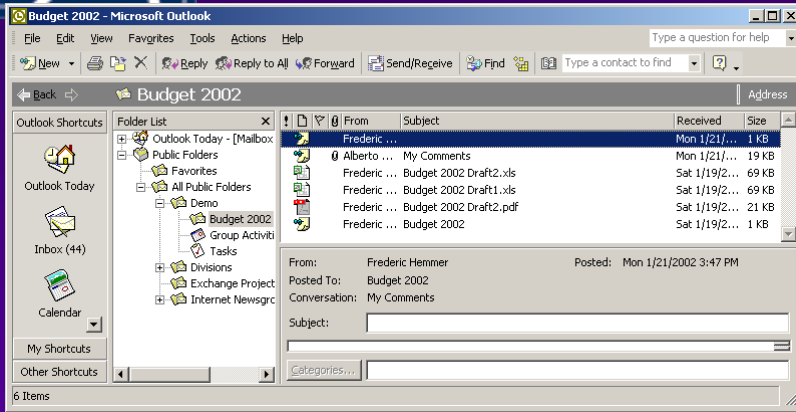


Current Plan

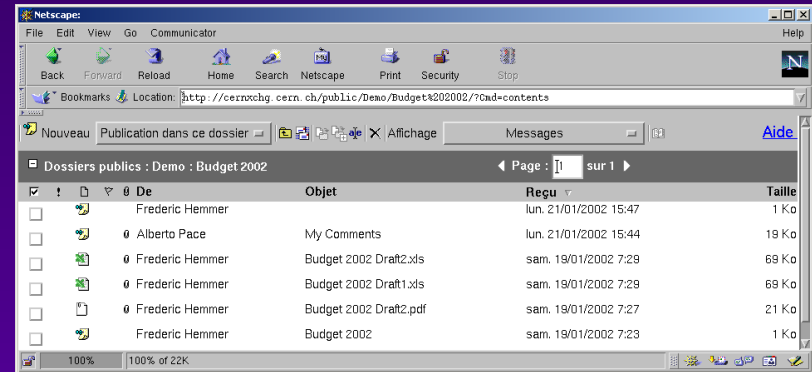
- ◆ **Prototype (4Q01-1Q02)**
 - ◆ Explore possibilities, alternative architectures, initial how-to's, sources of worries, prepare questions
 - ◆ Understand initial costs
 - ◆ Collect initial experience in order to propose a Pilot
- ◆ **Pilot (2Q02-3Q02)**
 - ◆ **Ensure User needs are satisfied**
 - ◆ **Identify potential problems, limitations**
 - ◆ **Identify cost & extra work needed**
 - ◆ **Identify risks and long term costs**
 - ◆ **Limited (or targeted) at a well-know user community**
 - ◆ **Identify potential migration issues**
 - ◆ **Prepare training and documentation needs**
- ◆ *Deployment (3Q02-1Q03) - subject to successful pilot and management approval*
 - ◆ *Open to everybody*
 - ◆ *Migration plans understood and applied*



Outlook

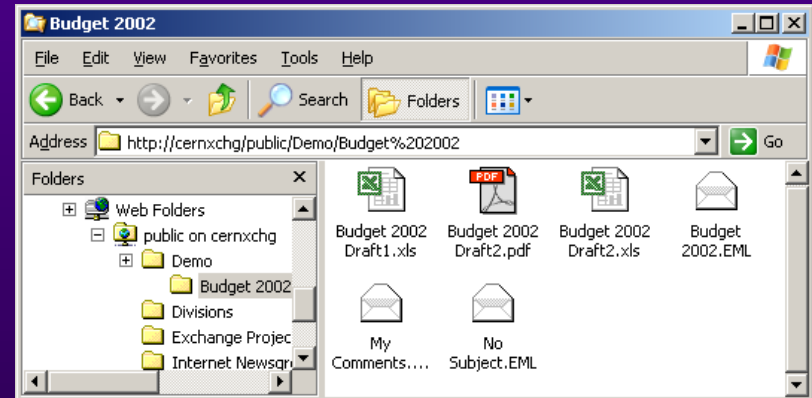
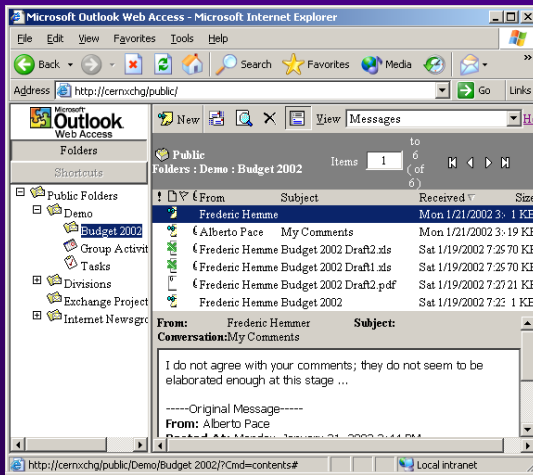


Netscape 4.75 on Ixplus



Internet Explorer

Web folder





Conclusion

- ◆ For the user
 - ◆ Exchange 2000 could give opportunity to long outstanding requests:
 - ◆ Mail, Calendar and more
 - ◆ Web access to most of the features
 - ◆ Does not rely on any particular client (browser ≥ 4)
 - ◆ and allowing group collaboration
 - ◆ e-groups and “groupware”
- ◆ For IT/IS
 - ◆ While taking into account the constant search for economy
 - ◆ Maintenance/Server replacement at least 30% cheaper (per year) assuming 13000 users
 - ◆ And address manpower issues
 - ◆ by consolidating on a platform that we have to support anyway
 - ◆ reducing diversity requires less specialization
 - ◆ mail expertise currently limited to two individuals could expand to 7-8 persons
 - ◆ as well as potential integration of other products/security features
- ◆ An opportunity for offering more services & coverage for a global reduced/constant cost



<http://cern.ch/mail>

<http://cern.ch/web>

<http://cern.ch/win>

<http://cern.ch/it-div-is-techmeet>



CERN
Web Services



NICE
2000



NICE 2000
Server Infrastructure



NICE ^{xp}