



# Status of Windows 2000 deployment at CERN

Alberto Pace, for the IT/IS group - April 2002

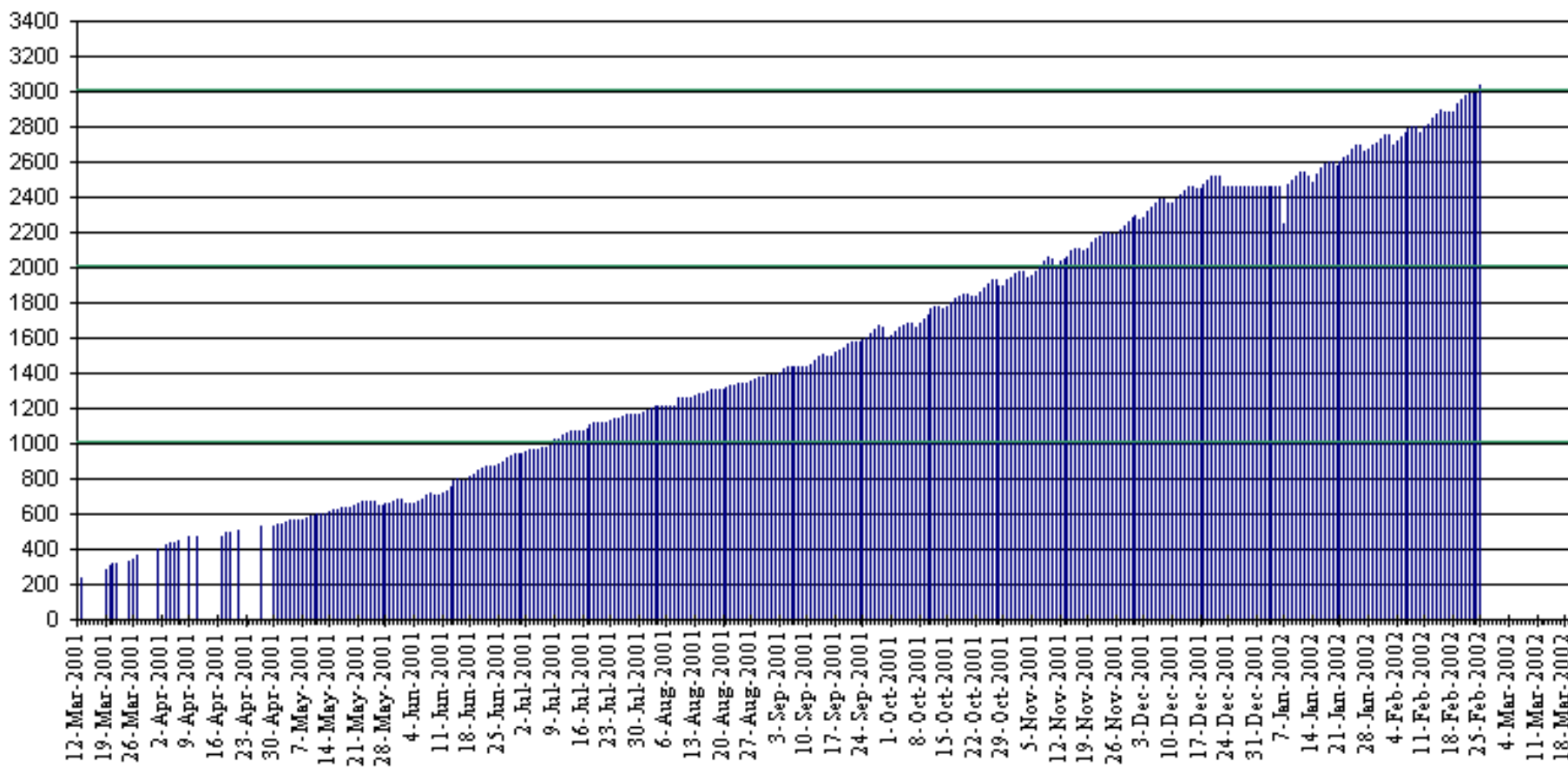
[alberto.pace@cern.ch](mailto:alberto.pace@cern.ch)

<http://cern.ch/alberto.pace>



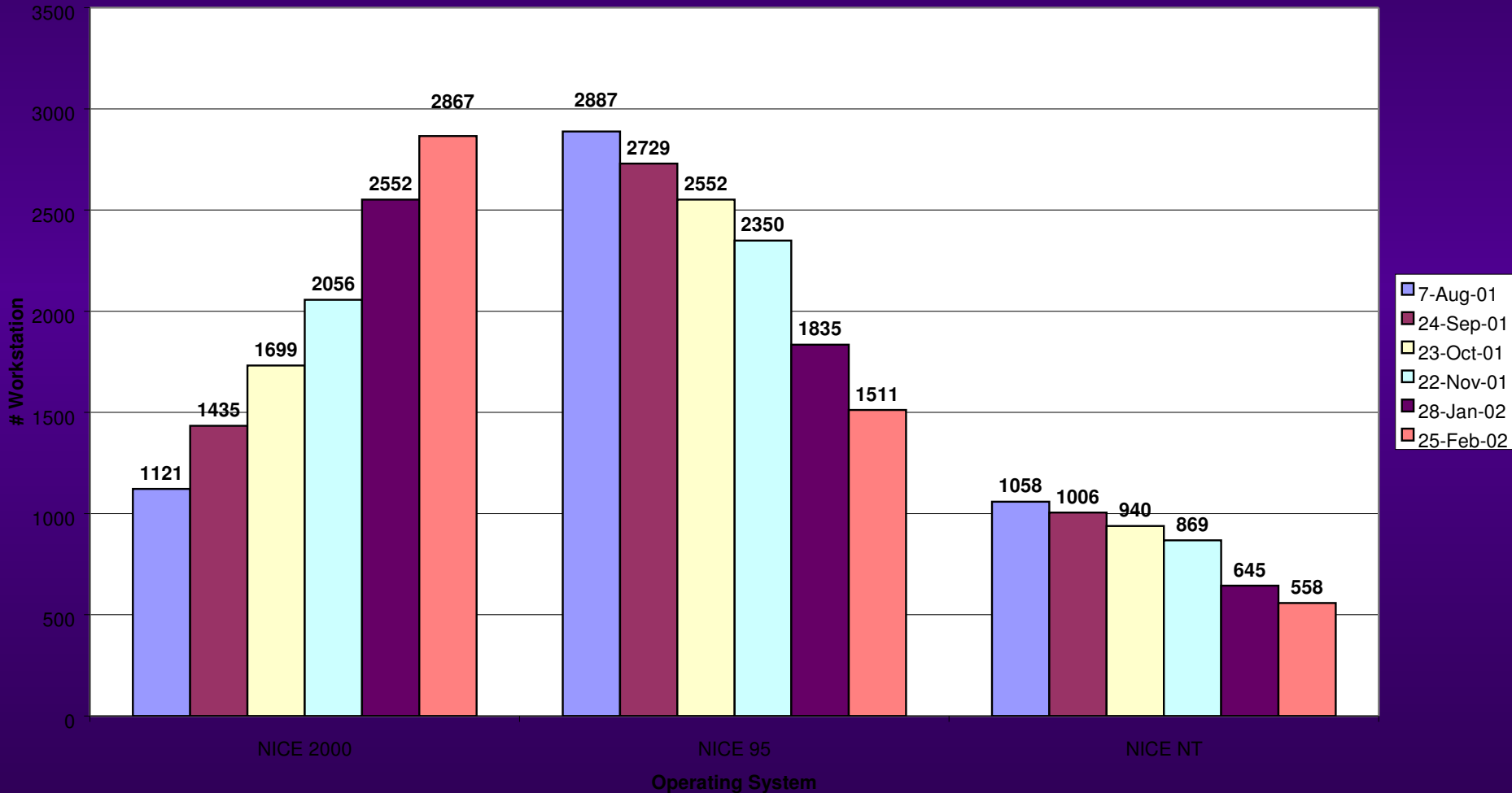
# NICE 2000 installations

W2K Professional Systems



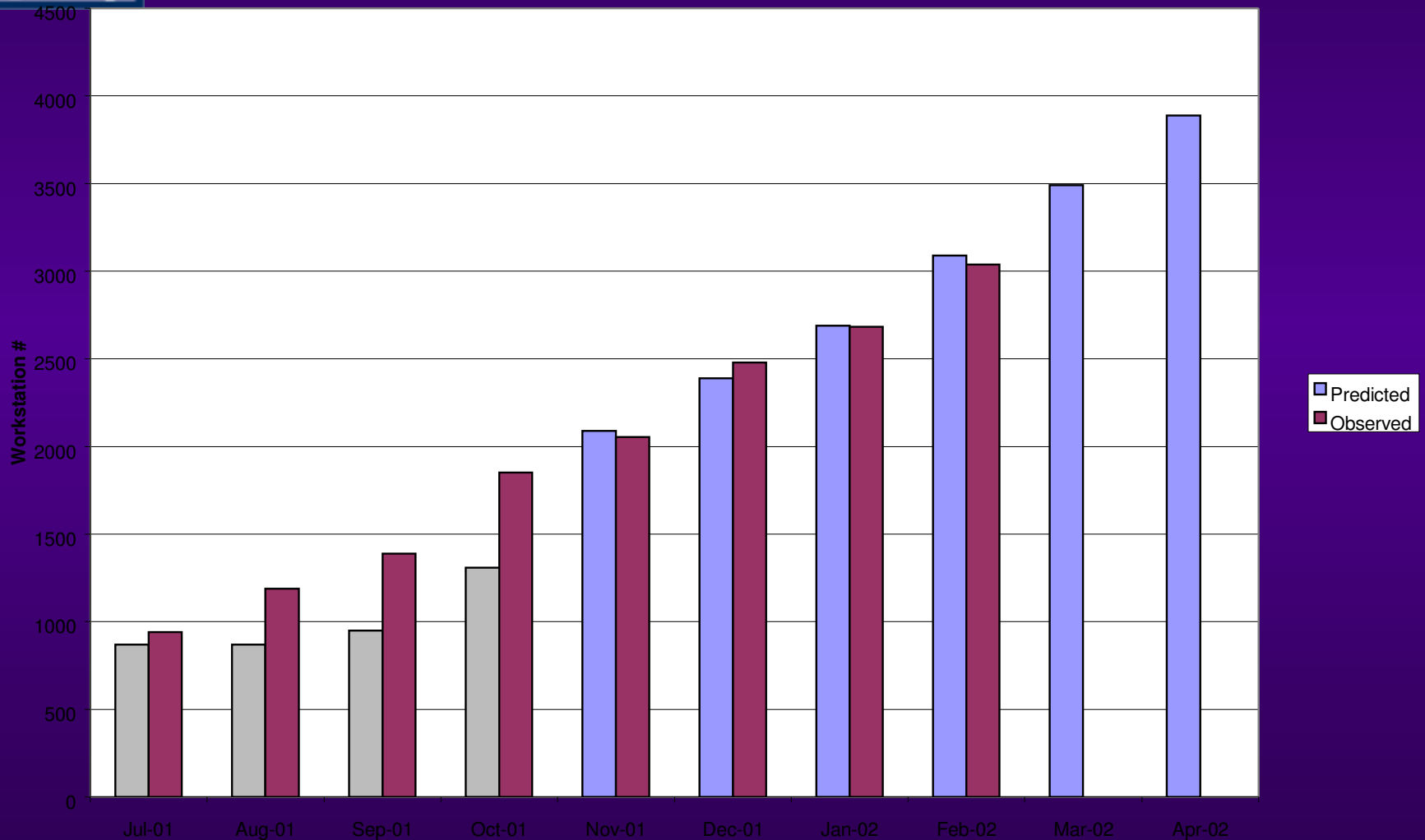


# NICE 2000 / 95 / NT comparison





# NICE2000 Deployment estimations





# Migration Team

- ◆ A migration team has been setup to help various CERN division
- ◆ During Feb – Apr, the team had 4 persons, almost entirely booked
- ◆ Important planning effort with all CERN Divisions

<http://cern.ch/w2kmtf/>



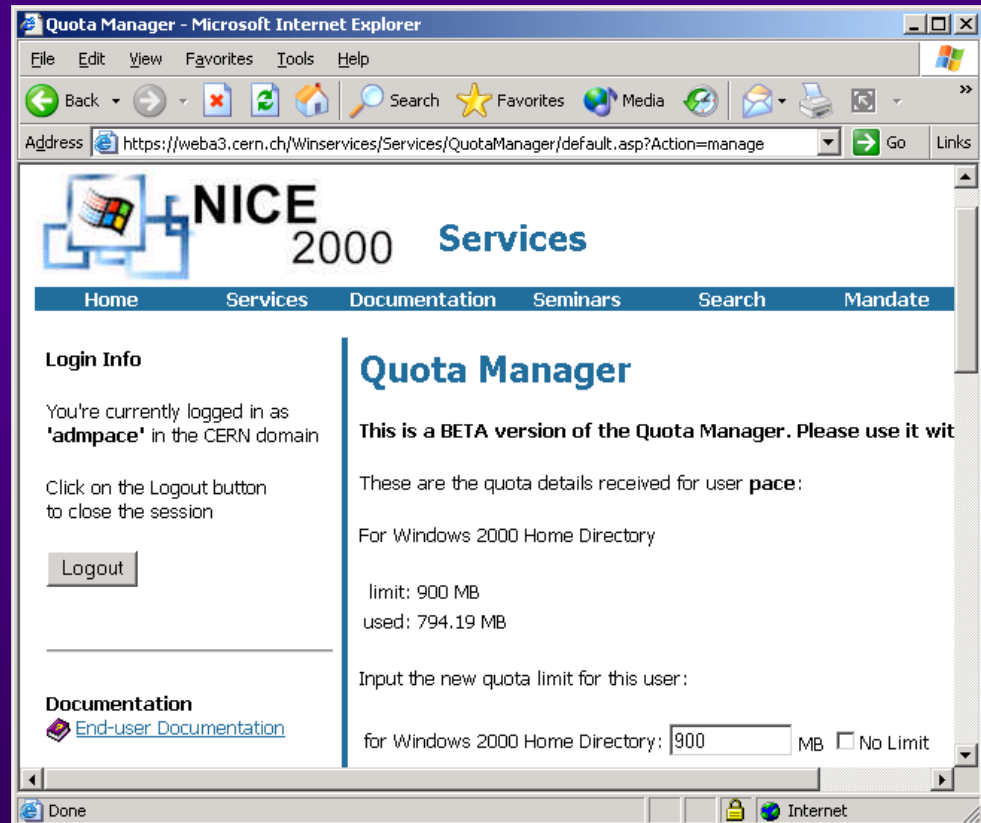
# Technicalities ...

- ◆ **W2k now in smooth operations**
- ◆ **Update cycles continuing**
  - ◆ **Exceed 7.1 introduced**
  - ◆ **G: drive mapping has been introduced**
  - ◆ **Oracle software upgraded and redeployed**
  - ◆ **Several security patch for IE introduced**
    - ◆ often ready to deploy within hours after the announcement
  - ◆ **RealPlayer security patch introduced**
  - ◆ **Norton AntiVirus 7.6 introduced**
  - ◆ **Siemens Simatic Step7 available**
  - ◆ **AFS progress**
    - ◆ `\\cern.ch\dfs\Applications\IBM\OpenAFS-1.2.2a\INSTALLME.txt`
  - ◆ **Corel Suite SP2 available**
  - ◆ **SSH installed (PuTTY)**
- ◆ **Servers**
  - ◆ **Two locally managed servers moved to the Computer Centre**
- ◆ **Desktops**
  - ◆ **Image shipped for the new “EOLA” desktop PC**
  - ◆ **New portables being evaluated**



# Demo

- ◆ The new quota manager





# Current Plan

- ◆ Freeze NICE 95/NT by end of 2001
  - ◆ Still installable by floppy
  - ◆ No new applications, functionality, etc
- ◆ Stop (central) support by mid 2002
  - ◆ **No answers from helpdesk**
  - ◆ **Solution to problems: upgrade to W2K**
  - ◆ **Still installable by floppy**
- ◆ Ensure servers are running until end of 2002
  - ◆ **NICE 95/NT environment still working**
- ◆ Open question: when to remove NICE 95/NT as an option for new PC's
  - ◆ Before end of 2001 ?





# Conclusion

- ◆ For the user
  - ◆ NICE 2000 now the primary CERN desktop environment
  - ◆ Smooth operation, process (almost) fully automated
  - ◆ Hardware order / delivery / installation
  - ◆ Service reliable and stable
  - ◆ Help desk support line in place and “under control”
- ◆ For IT/IS
  - ◆ The whole group participates in 3<sup>rd</sup> level technical support, load per person very limited.
  - ◆ Plenty of new technology to investigate and digest
    - ◆ Windows XP clients
    - ◆ Active Directory policies for XP clients
    - ◆ Windows .NET server soon to be released
    - ◆ Integration of Windows Services with Exchange



<http://cern.ch/win>

<http://cern.ch/mail>

<http://cern.ch/web>

<http://cern.ch/it-div-is-techmeet>



**CERN**  
Web Services



**NICE**  
2000



**NICE 2000**  
Server Infrastructure



**NICE** <sup>xp</sup>